

Specification

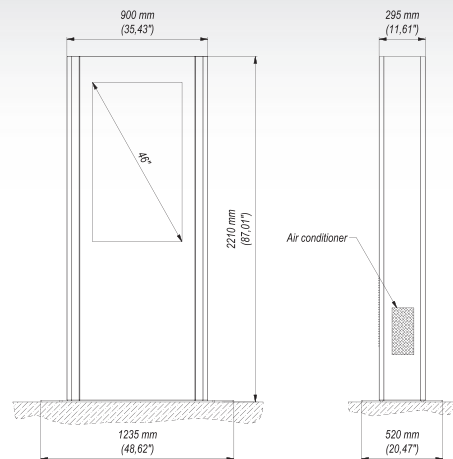
- Solid steel design
- Anti-glare tamper-proof glass
- Internal ventilation system
- Easy and simple maintenance



Technical Data

Screen (not included)  46"

Dimensions [mm] (H x W x D) **2010x900x445**



Customization Possibilities

- Laser-cut company logo
- Adaptable for any 42" to 52" screen

Trade Information

Index	Colour	Package	EAN
PDS2i-B			5908252962679

Package Dimensions [mm] (H x W x D)	2100x1000x500 mm
Weight [Kg]	70 Kg